

March 5, 2007 Meeting

## Pride of the Plainsmen Nominations Accepted through March

Members of the Enid High School Student Council are currently accepting nominations for the Pride of the Plainsmen Award.

Those nominated for the award must meet the following criteria: (1) have attended, served, honored or supported EHS in some way, (2) have demonstrated the ideals stated in the Plainsmen Creed, AND (3) have reflected a high degree of success in service to education, community or his/her career field.

Members of the EHS Student Council will select the Pride of the Plainsmen honoree in April. He/she will be recognized at the annual Class Day assembly in May.

For more information, contact Randy McClendon, sponsor, at 242-6178.

## Give Me Five!



The Cat in the Hat spends time with Taft Elementary students during lunch on Read Across America Day. Schools across the district planned events — from hosting guest readers to eating green eggs and ham. The event marked Dr. Seuss' 103rd birthday.

## Enid Public Schools 2007-08

### 4-Year-Old Enrollment

April 20 • 8 a.m. — 3 p.m.

Must be 4 years old on or before 9/1/07

5-year-olds must enroll in Kindergarten

20 Students Per Class • Enroll at Home School

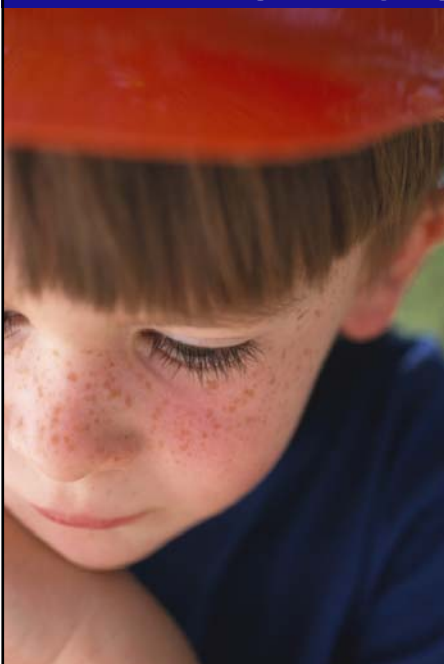
### Kindergarten Enrollment

April 27 • 8 a.m. — 3 p.m.

Must be 5 years old on or before 9/1/07

Enroll at Home School • Full-Day Classes

More Information? Call Chris Smith at 548-0337.



Bring to enrollment: immunization records • birth certificate • social security number

# Board Notes



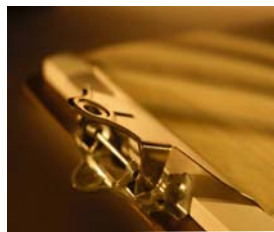
national competition.

The Board recognized members of the Enid High School Constitution Team for earning the state championship title and an invitation to



local voters, who approved the 2003 sales tax measure.

The Board approved an appropriation of \$144,229 in excess sales tax collections deposited in the Municipal Tax Levy Fund. The funds were made possible thanks to



approved a contract for the independent audit of financial transactions for fiscal year 2006-07 to be conducted by the Chas. W. Carroll auditing firm.

Board members approved a resolution authorizing the administration to apply for and participate in E-Rate funding for fiscal year 2007-08. They also



building-level administrators for the 2007-08 school year. A contract was also approved with Dr. John Provine for his provision of Schools Attuned training for EPS teachers. Board Policy [DO-P: Teacher Termination Procedures](#) was also approved so that board policy would comply with state statutes.

Board members approved the resignation of Sarah Walker, Garfield. They approved the rehiring of district- and



Enid. The action is required by state law because the building is no longer being used for school purposes.

The board authorized the administration to work with the school attorney to develop a contract to transfer the Roosevelt School site back to the City of

## EHS To Host Intercession Program

Enid High School will soon host intercession classes for students who need to earn credit for promotion or graduation. Area students are welcome to enroll.

The session will be conducted March 26-April 19. Classes will be offered Monday-Thursday, beginning at 4 p.m.

The following classes will be taught: English 9-12, creative writing and U.S. History. The cost is \$155 per class.

To enroll, please contact Anita Trojan in the EHS Guidance Office at 234-3639.

## Carver Open for Enrollment

Enrollment will be through March 13 for Carver Education Center's morning Academic Improvement Classes. Those interested should visit Carver, 815 S. 5th, between the hours of 8 a.m. and 4 p.m. or call 237-1400 to enroll by phone.

Carver offers free classes to help participants prepare for the new GED test, as well as to improve their academic skills. Students receive academic assessments to ensure proper placement.

The new morning classes will begin March 26 and will be conducted Mondays through Thursdays, 8:30-11:30 a.m.

Enrollment ends March 30.

The program is sponsored by Enid Public Schools and the Department of Education.

## Expenditure Reduction Plan Needed

Dr. Kem Keithly, Superintendent, announced during Monday night's board meeting that an expenditure reduction plan will be needed for the 2007-08 school year.

The district may receive significantly less revenue this year than originally expected, due in large part to a lack of supplemental funds from the legislature needed to cover expenses related to last year's teacher raise. School officials hope that legislators will provide supplemental appropriations to ease the situation. Reductions, however, will still need to be made.



## 2007 No Child Left Behind Report to Parents\*

\*Includes testing data from 2005-06, the most recent available.

Dear Parents:

It is with great pride that I present to you the district's 2007 No Child Left Behind Accountability Report. Below you will find important information about the achievements of this district.

We are committed to providing your child with the educational experience he/she deserves — qualified and compassionate teachers, quality instruction and varied extracurricular and academic opportunities. Your continued involvement in this process is welcomed and appreciated.

Thank you for your support of Enid Public Schools.

Sincerely,

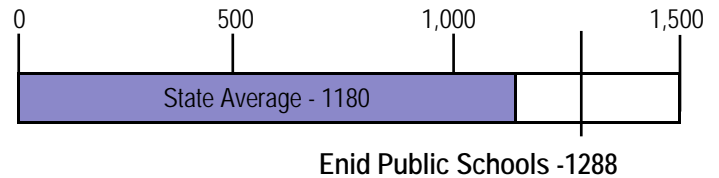
Dr. Garland K. Keithly, Superintendent

### ACADEMIC PERFORMANCE INDEX or API

The Academic Performance Index is a numeric score, formulated and adopted by the State Board of Education. At the elementary and junior high levels, API scores are based primarily on attendance and state-mandated tests. At the high school level, the formula also includes Advanced Placement performances, graduation rates, ACT scores and college remediation rates. The district also receives an API score based on many of the same factors.

ENID PUBLIC SCHOOLS API is **1288**.

The state average is **1180** on a scale of 0-1500



### ADEQUATE YEARLY PROGRESS or AYP

In order to meet Adequate Yearly Progress, school sites — and each of their subgroups — must meet performance targets in reading and math. The school's attendance and graduate rates are also considered. Subgroups include students who are economically disadvantaged, members of certain racial/ethnic groups, English Language Learners and/or those who receive special education services. The same performance target is set for all students. The district as a whole must also meet AYP.

ENID PUBLIC SCHOOLS exceeded AYP benchmarks.

EPS has **0** sites on the state's school improvement list.

Schools that fail to meet AYP for two consecutive years in the same subject are designated as "school improvement" sites. Schools can qualify for "safe harbor" status if they decrease the number of students who score unsatisfactory on mandated testing by 10% from the previous year.

Mathematics API Performance Benchmark 790	Reading API Performance Benchmark 768	% Students Tested Performance Benchmark 95
All Students		
1173	1122	99
Regular Education Students		
1279	1340	99

Graduation Rate API Performance Benchmark 882	Attendance API Performance Benchmark 664
1370	1000

### PROFESSIONAL QUALIFICATIONS FOR TEACHERS

No Child Left Behind generally describes a "highly qualified" teacher as one with full certification, a bachelor's degree and demonstrated competency in his/her subject area and teaching. In Oklahoma, teachers fulfill this requirement in a number of ways including: (1) passing a state certification test; (2) earning a masters or bachelors degree in their respective teaching areas; (3) earning National Board Certification or (4) qualifying through HOUSSSE, which is a program that allows teachers to prove competency through set criteria, including years of experience, awards and other accomplishments.

**96.7%** of ENID PUBLIC SCHOOLS teachers are designated as "Highly Qualified" under No Child Left Behind.\*

\*3.3% of EPS teachers are currently in the process of fulfilling requirements, as defined by the federal government.

### Professional Qualifications of EPS Teachers

Degree Level	Bachelors	Masters
Percent of Teachers	68%	32%

If you would like to view a full copy of this report, including district test scores, please visit:

[www.enidpublicschools.org/nclbreport.pdf](http://www.enidpublicschools.org/nclbreport.pdf)