

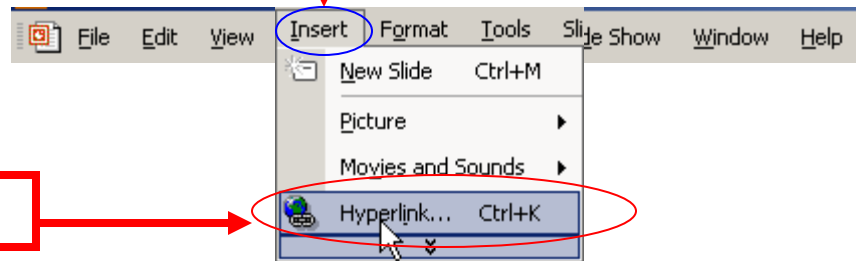
Session I Part 9: Creating A Video Hyperlink

In this session you will learn how to hyperlink from one object to another even though they might have very different forms. For example, while after showing a video about a volcano in Alaska, you might click on the Google Earth KMZ file, which could display a satellite view of a volcano located in Alaska or perhaps even invoke a recording of narrative about the history of the volcano simultaneously.



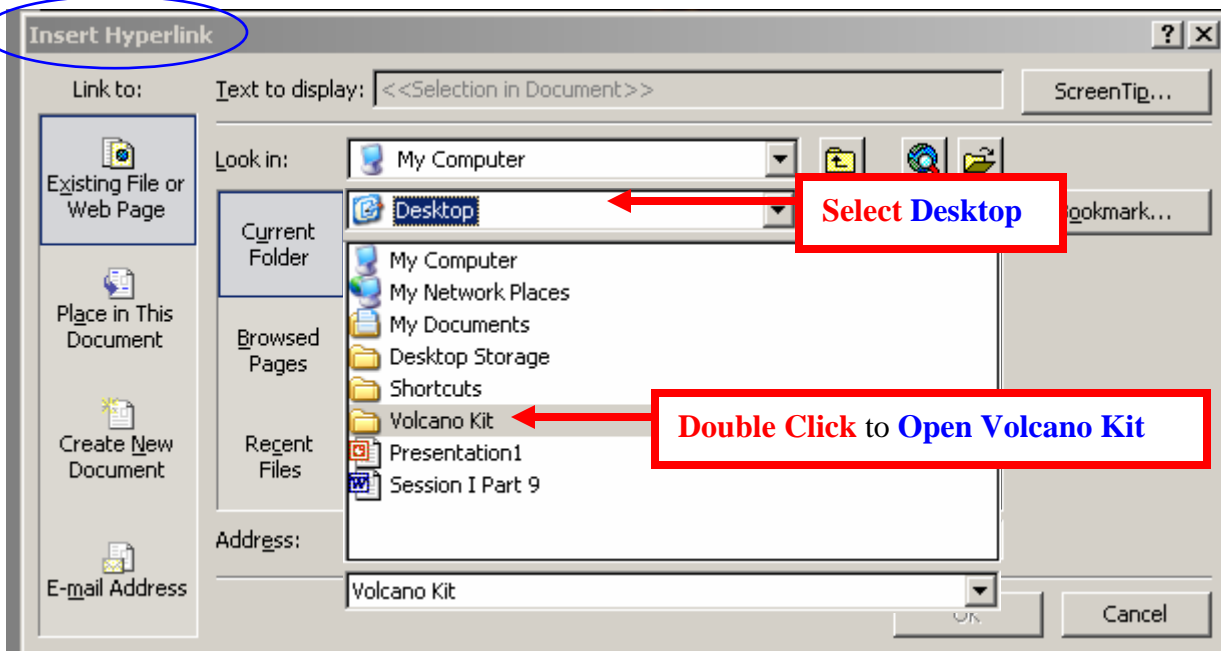
To begin you will need to click on the gearbox located on the bottom right hand corner of the screen.

Then go to the **“Insert” pull down menu** located at the top left hand portion of the screen.

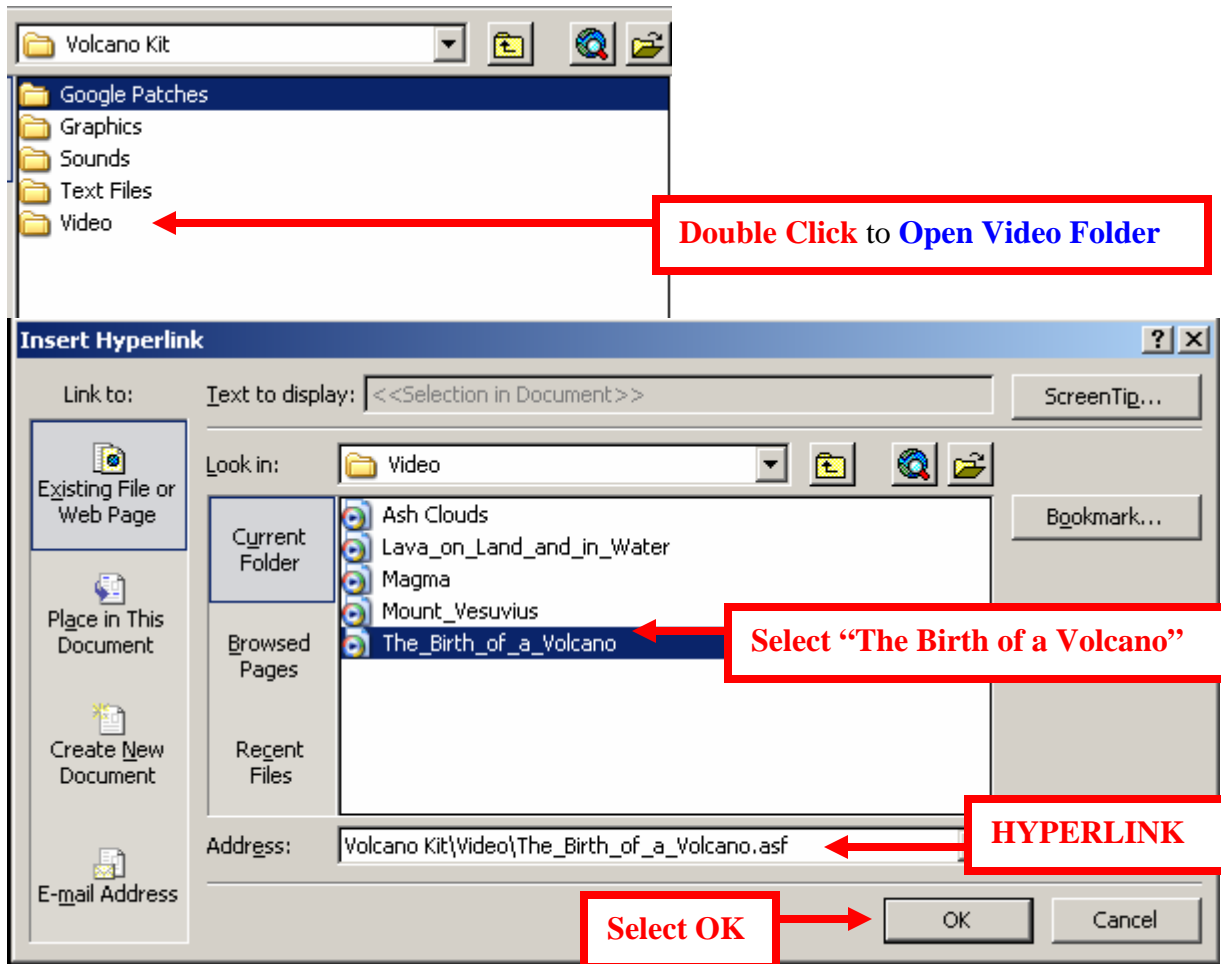


Select hyperlink.

This action will cause the Insert Hyperlink Box to appear. Notice the pull down menu is showing my computer. The video file is stored in the volcano kit which is located on the desktop.



Double clicking on the “Volcano Kit” folder will open the folder files in a new window.



By selecting the OK button the file will be linked to the gearbox. When you view the presentation file the gearbox will appear in the left hand corner of the presentation screen. Double clicking on the gearbox sends a message to activate the video file to play in the window.

[Click Here](#) for a **QuickTime** demonstration on hyper-linking.

[Click Here](#) for a **Windows Media** demonstration on hyper-linking